

Cast Iron Gate Valve

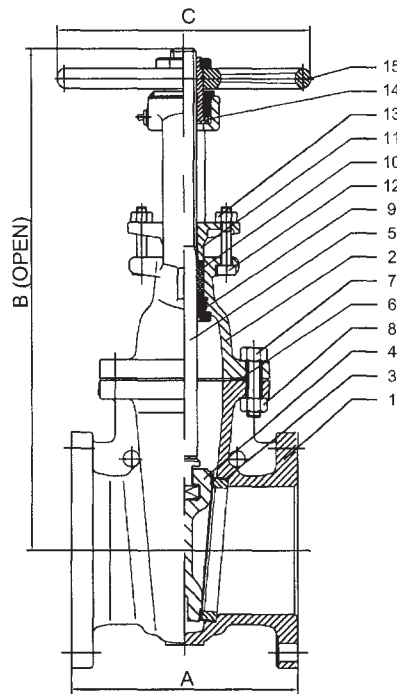
Model #12FGAZ (OS&Y)
Class 125 (2" to 24")

STANDARD:

Design according to MSS SP-70
 Pressure/Temperature Rating: ANSI B16.1
 Face to Face Dimensions: ANSI B16.10
 End Flange Dimensions: ANSI B16.1
 Wall thickness: ANSI B16.1
 Valves Tested According to API 598

WORKING PRESSURE:

2 to 12" - 125psi Steam, Basic Rating 200psi Cold Working Pressure
 14 to 24" - 100psi Steam, Basic Rating 150psi Cold Working Pressure



NO.	PART NAME	MATERIAL
1	BODY	ASTM A126-B
2	BONNET	ASTM A126-B
3	SEAT RING	BRONZE ASTM B62
4	WEDGE	ASTM A126-B+BRONZE
5	STEM	BRASS ASTM B16
6	GASKET	GRAPHITE
7	BOLTS	ASTM A307-B
8	NUTS	ASTM A307-B
9	BACKSEAT BUSHING	BRONZE ASTM B62
10	PACKING	GRAPHITE
11	PACKING GLAND	ASTM A126-B
12	GLAND FOLLOWER BOLT	ASTM A307-B
13	GLAND FOLLOWER NUT	ASTM A307-B
14	YOKE NUT	ASTM A439 D-2
15	HANDWHEEL	DUCTILE IRON
16	YOKE	ASTM A126-B

SIZE	INCH	2	2½	3	3½	4	5	6	8	10	12	14	16	18	20	24
	MM	50	65	80	90	100	130	150	200	250	300	350	400	450	500	600
A	INCH	7	7.5	8	8.5	9	10	10.5	11.5	13	14	15	16	17	18	20
	MM	178	190.5	203	216	229	254	267	292	330	356	381	406	432	457	508
B	INCH	12.5	13.5	19	21.5	23	26.5	30	37.75	45	53	61.75	69	77.5	98	116.5
	MM	326	343	482	546	589	677	762	958	1145	1342	1568	1758	1966	2489	2959
C	INCH	8	8	8	10	10	12	12	14	16	18	22	24	27	27	29.5
	MM	200	200	200	250	250	300	300	350	400	450	550	600	680	680	746
Weight	lbs	42	57	70	85	105	135	171	277	453	677	894	1426	1742	2057	2706
	kgs	19	26	32	39	48	61	78	126	205	307	406	647	790	933	1227

Cast Iron Gate Valve



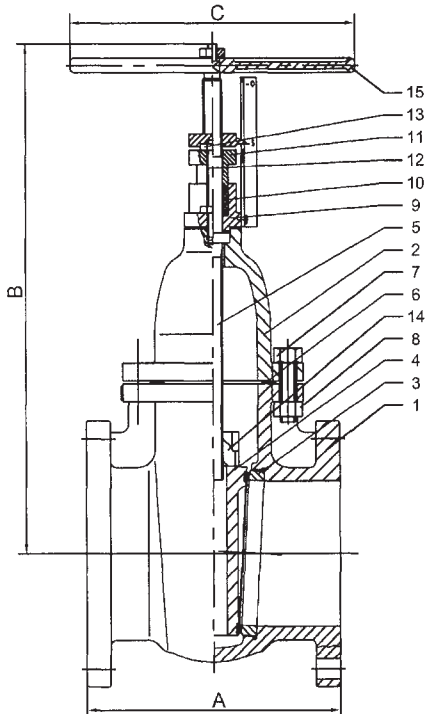
Model #12FGANZ (Non-Rising Stem)
Class 125 (2" to 24")

STANDARD:

Design according to MSS SP-70
Pressure/Temperature Rating: ANSI B16.1
Face to Face Dimensions: ANSI B16.10
End Flange Dimensions: ANSI B16.1
Wall thickness: ANSI B16.1
Valves Tested According to API 598

WORKING PRESSURE:

2" to 12" - 125psi Steam, Basic Rating 200psi Cold Working Pressure
14" to 24" - 100psi Steam, Basic Rating 150psi Cold Working Pressure



NO.	PART NAME	MATERIAL
1	BODY	ASTM A126-B
2	BONNET	ASTM A126-B
3	SEAT RING	BRONZE ASTM B62
4	WEDGE	ASTM A126-B+BRONZE
5	STEM	BRASS ASTM B16
6	GASKET	GRAPHITE
7	BOLTS	ASTM A307-B
8	NUTS	ASTM A307-B
9	YOKE	BRONZE ASTM B62
10	PACKING	GRAPHITE
11	PACKING GLAND	ASTM A126-B
12	GLAND FOLLOWER BOLT	ASTM A307-B
13	GLAND FOLLOWER NUT	ASTM A307-B
14	YOKE NUT	ASTM A439 D-2
15	HANDWHEEL	DUCTILE IRON

SIZE	INCH	2	2½	3	4	5	6	8	10	12	14	16	18	20	24	
	MM		50	65	80	100	130	150	200	250	300	350	400	450	500	600
A	INCH		7	7.5	8	9	10	10.5	11.5	13	14	15	16	17	20	
	MM		178	190.5	203	229	254	267	292	330	356	381	406	432	457	508
B	INCH		12.25	13	14.5	17	18	22	26	30	36	41	42.5	46.5	54.25	57.5
	MM		311	330	366	429	457	555	657	767	916	1041	1080	1180	1378	1461
C	INCH		8	8	8	10	12	12	14	16	18	20	22	24	28	28
	MM		200	200	200	250	300	300	350	400	450	500	560	610	715	715
Weight	lbs		40	55	66	96	143	171	279	433	622	968	1093	1333	1958	2574
	kgs		19	25	30	44	65	78	127	196	282	439	496	605	888	1168

Cast Iron Gate Valve

Model #25FGAZ (OS&Y)
Class 250 (2" to 10")

STANDARD:

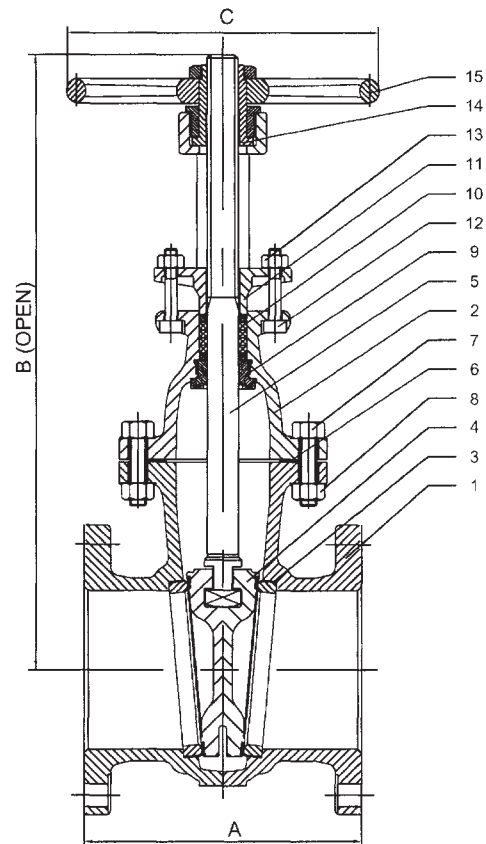
Design according to MSS SP-70
 Pressure/Temperature Rating: ANSI B16.1
 Face to Face Dimensions: ANSI B16.10
 End Flange Dimensions: ANSI B16.1
 Wall thickness: ANSI B16.1
 Valves Tested According to API 598

SERVICE RATING:

250psi Saturated Steam to 406 F or 207 C
 250psi Fluid to 450 F to 232 C
 500psi Non-Shock Cold Water, Oil or Gas to -20 F to 150 F or -29 C to 66 C



NO.	PART NAME	MATERIAL
1	BODY	ASTM A126-B
2	BONNET	ASTM A126-B
3	SEAT RING	BRONZE ASTM B62
4	WEDGE	ASTM A126-B + BRONZE
5	STEM	BRASS ASTM B16
6	GASKET	GRAPHITE
7	BOLTS	ASTM A307
8	NUTS	ASTM A307
9	BACKSEAT BUSHING	BRONZE ASTM B62
10	PACKING	GRAPHITE
11	PACKING GLAND	ASTM A126-B
12	GLAND FOLLOWER BOLT	ASTM A307
13	GLAND FOLLOWER NUT	ASTM A307
14	YOKE NUT	ASTM B62
15	HANDWHEEL	ASTM A126-B
16	YOKE	ASTM A126-B

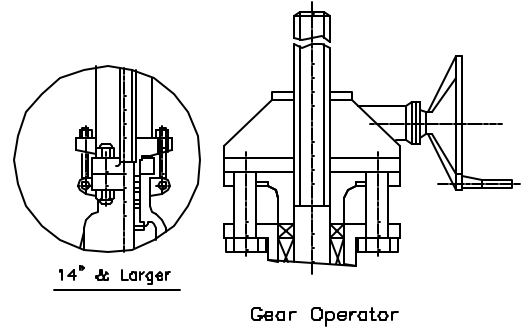


SIZE	INCH	2	2½	3	4	5	6	8	10
	MM	50	65	80	100	130	150	200	250
A	INCH	8.5	9.5	11.12	12	15	15.88	16.5	18
	MM	216	241	283	305	381	403	419	457
B	INCH	14	15.75	16	21	24.5	25	33.5	41.5
	MM	350	400	407	534	622	629	851	1048
C	INCH	9	10	10	12	16	16	18	18
	MM	230	250	250	300	400	400	450	450
Weight	lbs	61	80	104	175	280	300	433	561
	kgs	28	36	47	80	127	136	197	255

Cast Steel Gate Valve

Class 150 Flanged (2" to 36") - 15FGAW

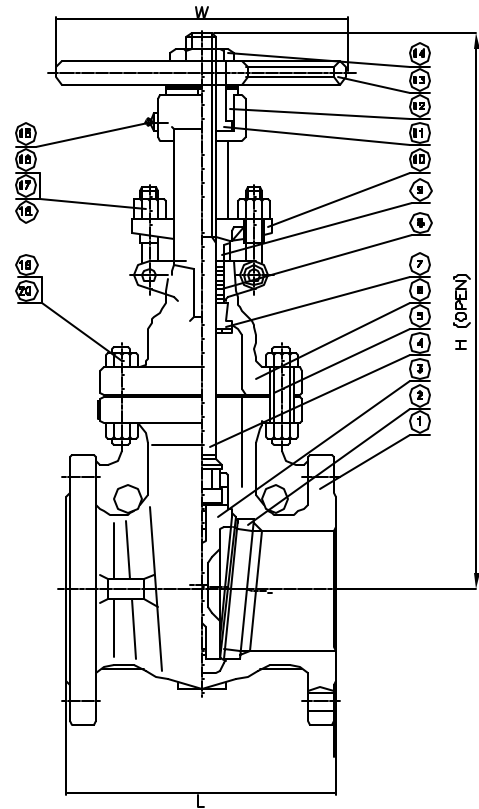
Class 150 Butt Weld (2" to 36") - 15BGAW



NO.	PART NAME	MATERIAL
1	BODY	A216 WCB
2	SEAT	A105+HF
3	WEDGE	WCB+F6
4	STEM	A182 F6
5	GASKET	Spiral Wound S5/Graphite
6	BONNET	A216 WCB
7	BACK SEAT	A276 410
8	PACKING	Graphite
9	PACKING GLAND	A276 410
10	GLAND	A216 WCB
11	STEM NUT	D-2 Ductile Iron
12	GLAND NUT	1035 Steel
13	HANDWHEEL	Ductile Iron
14	LOCK NUT	A29 1035 Steel
15	GREASE FITTING	Steel
16	EYE BOLT	A193 B7 Steel
17	EYE BOLT NUT	A194 2H Steel
18	EYEBOLT PIN	A29 1035 Steel
19	BOLT	A193 B7 Steel
20	NUT	A194 2H Steel

Davis cast steel valves comply with the following applicable specifications: ANSI B16.10, ANSI B16.5, API 600: Tested to API 598

Working Pressure: 285 WOG Body Testing Pressure: 428 psi
Seat Testing Pressure: 314 psi Air Testing Pressure: 80 psi

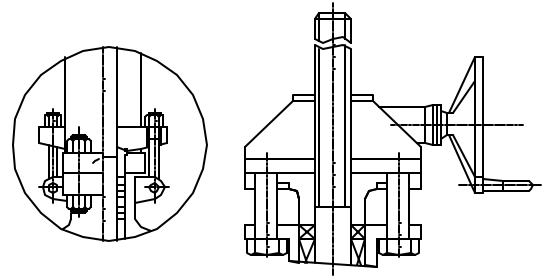


NPS d	in	2	2-1/2	3	4	5	6	8	10	12	14	16	18	20	24	30	36
	mm	51	64	76	102	127	152	203	254	305	337	387	438	489	591	743	915
L (RF)	in	7	7.5	8	9	10	10.5	11.5	13	14	15	16	17	18	20	24	28
	mm	178	190	203	229	254	267	292	330	356	381	406	432	457	508	610	711
L (BW)	in	8.50	9.50	11.14	12.00	15.00	15.88	16.50	18.00	19.76	22.50	24.00	26.00	26.00	32.00	36	40
	mm	216	241	283	305	381	403	419	457	502	572	610	660	711	813	914	1016
H (open)	in	15.20	17.13	19.02	23.11	26.50	30.20	37.60	45.12	52.28	59.80	67.76	74.80	83.31	97.64	134.5	161.8
	mm	386	435	483	587	673	767	955	1146	1328	1519	1721	1900	2116	2480	3417	4109
W	in	7.87	7.87	9.84	9.84	11.81	11.81	13.78	17.72	19.89	18.11	18.11	18.11	24.02	24.02	Gear	Gear
	mm	200	200	250	250	300	300	350	450	500	460*	460*	460*	610*	610*		
WT (lbs)	RF	44	66	79	117	157	187	300	485	712	853	1219	1455	1786	2756	4343	7070
	BW	37	57	64	101	146	170	256	445	648	772	1116	1268	1587	2491	4482	7209

Cast Steel Gate Valve

Class 300 Flanged (2" to 36") - 30FGAW

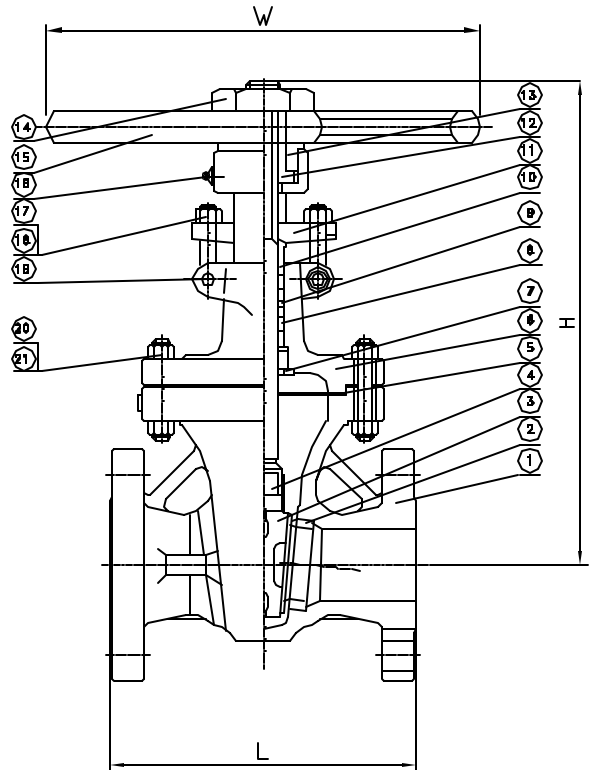
Class 300 Butt Weld (2" to 24") - 30BGAW



12" & Larger

Gear Operator

NO.	PART NAME	MATERIAL
1	BODY	A216 WCB
2	SEAT	A105+HF
3	WEDGE	WCB+F6
4	STEM	A182 F6
5	GASKET	Spiral Wound S5/Graphite
6	BONNET	A216 WCB
7	BACK SEAT	A276 410
8	PACKING	Graphite
9	DISTANCE RING	A276 410
10	PACKING GLAND	A276 410
11	GLAND	A216 WCB
12	STEM NUT	D-2 Ductile Iron
13	GLAND NUT	A29 1D35 Steel
14	LOCK NUT	A29 1D35 Steel
15	HANDWHEEL	Ductile Iron
16	GREASE FITTING	Steel
17	EYE BOLT	A193 B7 Steel
18	EYE NUT	A194 2H Steel
19	PIN	A29 1D35 Steel
20	BOLT	A193 B7 Steel
21	NUT	A194 2H Steel



Davis cast steel valves comply with the following applicable specifications: ANSI B16.10, ANSI B16.5, API 600: Tested to API 598

Working Pressure: 740 WOG Body Testing Pressure: 1110 psi
Seat Testing Pressure: 814 psi Air Testing Pressure: 80 psi

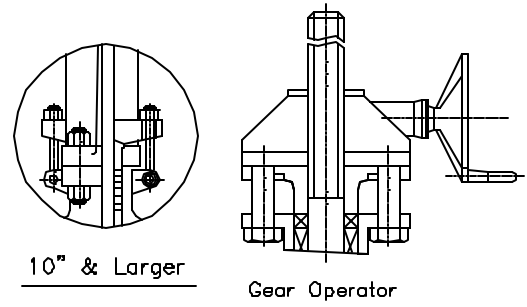
NPS d	in	2	2-1/2	3	4	5	6	8	10	12	14	16	18	20	24	30	36
	mm	51	64	76	102	127	152	203	254	305	337	387	432	483	584	737	876
L (RF & BW)	in	8.5	9.5	11.12	12	15	15.88	16.5	18	19.75	30	33	38	39	45	55	68
	mm	216	241	283	305	381	403	419	457	502	572	610	660	711	1143	1397	1727
H (open)	in	16.42	18.11	20.71	25.59	27.32	32.44	38.86	46.93	56.34	61.38	69.21	76.46	84.45	102.44	138.0	156
	mm	417	460	526	650	694	824	987	1192	1431	1559	1758	1942	2145	3602	3505	3962
W	in	7.87	9.84	9.84	9.84	11.81	13.78	17.72	19.69	22.05	18.11	18.11	24.02	24.02	Gear	Gear	Gear
	mm	200	250	250	250	300	350	450	500	560	460*	460*	610*	610*			
WT (Lbs)	RF	66	86	121	183	203	302	529	734	1182	1541	2227	2657	3792	7529	10817	15300
	BW	57	75	104	150	170	260	430	597	952	1312	1870	2260	3219	6737	-	-

* Manual gear operator is recommended.

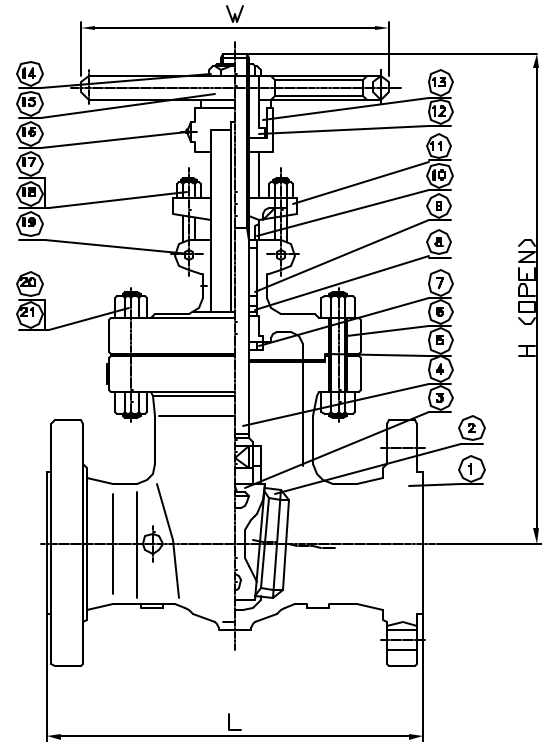
Cast Steel Gate Valve

Class 600 Flanged (2" to 20") - 60FGAW

Class 600 Butt Weld (2" to 20") - 60BGAW



NO.	PART NAME	MATERIAL
1	BODY	A216 WCB
2	SEAT	A105+HF
3	WEDGE	WCB+F6
4	STEM	A182 F6
5	GASKET	Spiral Wound 5S/Graphite
6	BONNET	A216 WCB
7	BACK SEAT	A276 410
8	PACKING	Graphite
9	DISTANCE RING	A276 410
10	PACKING GLAND	A276 410
11	GLAND	A216 WCB
12	STEM NUT	D-2 Ductile Iron
13	GLAND NUT	A29 1035 Steel
14	LOCK NUT	A29 1035 Steel
15	HANDWHEEL	Ductile Iron
16	GREASE FITTING	Steel
17	EYE BOLT	A193 B7 Steel
18	EYE NUT	A194 2H Steel
19	PIN	A29 1035 Steel
20	BOLT	A193 B7 Steel
21	NUT	A194 2H Steel



Davis cast steel valves comply with the following applicable specifications: ANSI B16.10, ANSI B16.5, API 600: Tested to API 598

Working Pressure: 1480 WOG Body Testing Pressure: 2220 psi
 Seat Testing Pressure: 1628 psi Air Testing Pressure: 80 psi

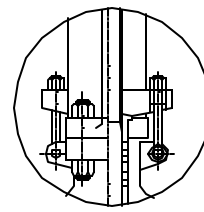
NPS	in	2	2-1/2	3	4	6	8	10	12	14	16	18	20
	d	mm	51	64	76	102	152	200	248	298	327	375	419
L	in	11.5	13	14	17	22	26	31	33	35	39	43	47
	(RF & BW)	mm	292	330	356	432	559	660	787	838	889	991	1194
H	in	16.81	18.62	21.18	25.87	34.33	43.35	50.35	58.5	64.69	70.79	82.72	88.94
	(open)	mm	427	473	538	657	872	1101	1279	1486	1643	1798	2101
W	in	9.84	9.84	11.81	13.78	19.69	22.05	25.2	24.02	24.02	24.02	24.02	29.92
	mm	250	250	300	350	500	560	640	610*	610*	610*	610*	760*
WT	RF	90	128	194	289	558	911	1373	1728	2840	4012	4740	5600
	(Lbs)	BW	77	110	150	229	459	723	1093	1404	2469	3192	4030

* Manual gear operator is recommended.

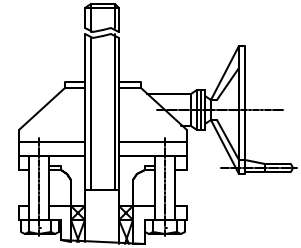
Cast Steel Gate Valve

Class 900 Flanged (2" to 16") - 90FGAW

Class 900 Butt Weld (2" to 16") - 90BGAW

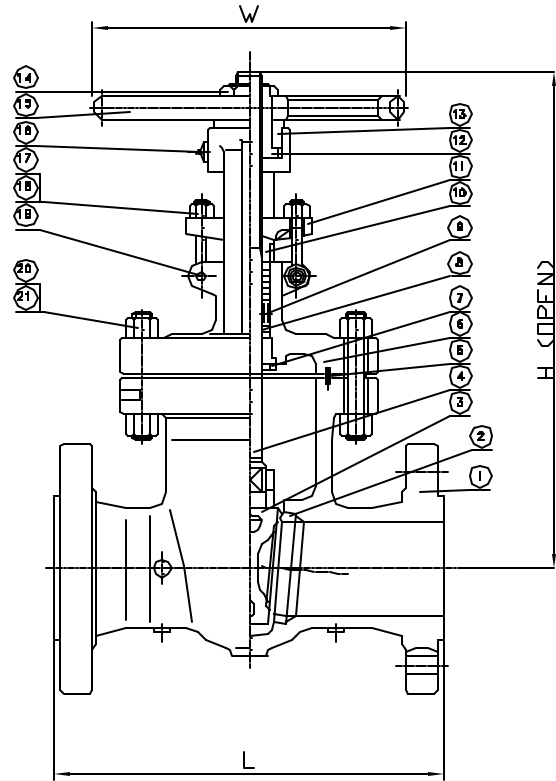


6" & Larger



Gear Operator

NO.	PART NAME	MATERIAL
1	BODY	A216 WCB
2	SEAT	A105+HF
3	WEDGE	WCB+F6
4	STEM	A182 F8
5	GASKET	Spiral Wound SS/Graphite
6	BONNET	A216 WCB
7	BACK SEAT	A276 410
8	PACKING	Graphite
9	DISTANCE RING	A276 410
10	PACKING GLAND	A276 410
11	GLAND	A216 WCB
12	STEM NUT	D-2 Ductile Iron
13	GLAND NUT	A29 1035 Steel
14	LOCK NUT	A29 1035 Steel
15	HANDWHEEL	Ductile Iron
16	GREASE FITTING	Steel
17	EYE BOLT	A193 B7 Steel
18	EYE NUT	A194 2H Steel
19	PIN	A29 1035 Steel
20	BOLT	A193 B7 Steel
21	NUT	A194 2H Steel



Davis cast steel valves comply with the following applicable specifications: ANSI B16.10, ANSI B16.5, API 600: Tested to API 598

Working Pressure: 2220 WOG Body Testing Pressure: 3330 psi
 Seat Testing Pressure: 2442 psi Air Testing Pressure: 80 psi

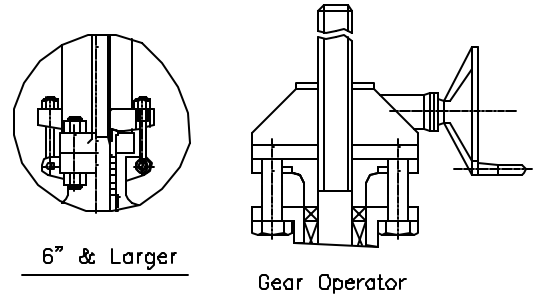
NPS	d	2	2-1/2	3	4	6	8	10	12	14	16
		mm	47	57	73	98	146	190	238	282	311
L (RF & BW)	in	14.5	16.5	15	18	24	29	33	38	40.5	44.5
	mm	368	419	381	457	610	737	838	965	1029	1130
H (open)	in	21.54	27.56	25.51	28.7	40.98	49.61	62.6	70.67	79.72	85.43
	mm	547	700	648	729	1041	1260	1590	1795	2025	2170
W	in	11.81	13.78	15.75	17.72	22.05	18.11	24.02	24.02	29.92	29.92
	mm	300	350	400	450	560	460*	610*	610*	760*	760*
WT (Lbs)	RF	198	243	271	326	926	1433	2557	3748	5071	6063
	BW	181	205	238	269	791	1248	2161	3197	4409	5269

* Manual gear operator is recommended.

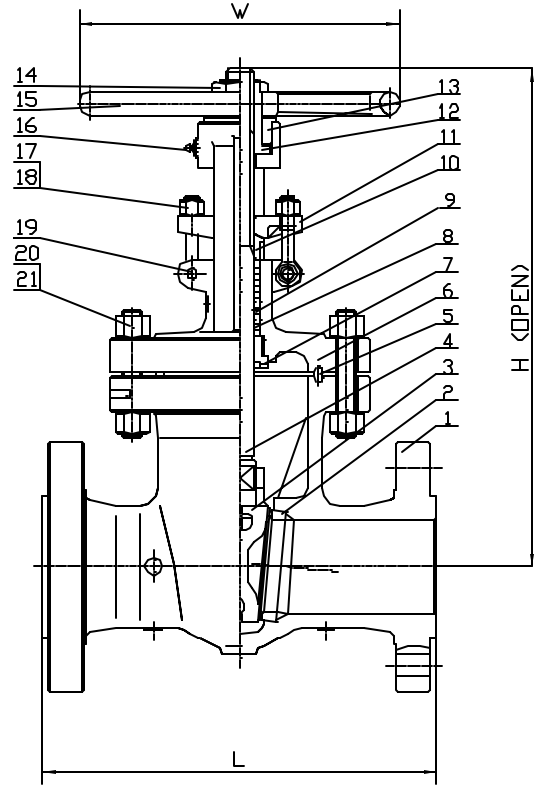
Cast Steel Gate Valve

Class 1500 Flanged (2" to 16") - 150FGAW

Class 1500 Butt Weld (2" to 16") - 150BGAW



NO.	PART NAME	MATERIAL
1	BODY	A216 WCB
2	SEAT	A105+HF
3	WEDGE	WCB+F6
4	STEM	A182 F6
5	GASKET	Spiral Wound SS/Graphite
6	BONNET	A216 WCB
7	BACK SEAT	A276 410
8	PACKING	Graphite
9	DISTANCE RING	A276 410
10	PACKING GLAND	A276 410
11	GLAND	A216 WCB
12	STEM NUT	D-2 Ductile Iron
13	GLAND NUT	A29 1035 Steel
14	LOCK NUT	A29 1035 Steel
15	HANDWHEEL	Ductile Iron
16	GREASE FITTING	Steel
17	EYE BOLT	A193 B7 Steel
18	EYE NUT	A194 2H Steel
19	PIN	A29 1035 Steel
20	BOLT	A193 B7 Steel
21	NUT	A194 2H Steel



Davis cast steel valves comply with the following applicable specifications: ANSI B16.10, ANSI B16.5, API 600: Tested to API 598

Working Pressure: 3705 WOG Body Testing Pressure: 5560 psi
 Seat Testing Pressure: 4075 psi Air Testing Pressure: 80 psi

NPS d	in	2	2-1/2	3	4	6	8	10	12	14	16
	mm	47	57	70	92	136	178	222	263	289	330
L (RF & BW)	in	14.5	16.5	18.5	21.5	27.75	32.75	39	44.5	48.5	54.5
	mm	368	419	470	546	705	832	991	1130	1257	1384
H (open)	in	22.6	27.56	31.73	34.92	42.48	53.94	59.84	65	76.57	88.58
	mm	574	700	806	887	1079	1370	1520	1651	1945	2250
W	in	13.78	15.75	17.72	22.05	12.01	24.02	29.92	29.92	29.92	29.92
	mm	350	400	450	560	305*	610*	760*	760*	760*	760*
WT (Lbs)	RF	258	386	529	743	1499	2707	5022	7187	9039	13140
	BW	205	317	408	628	1287	2156	4387	6283	7319	10781

* Manual gear operator is recommended.

Stainless Steel Gate Valve

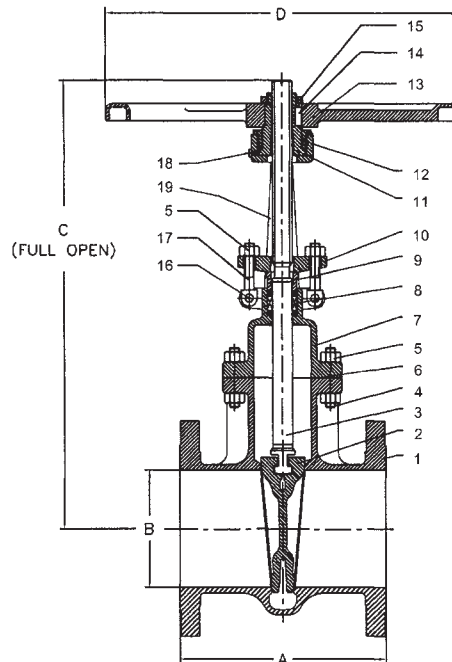
Model #10

Class 150 (1" to 24")

- Full port**
- Precision machined flexible wedge gate and seat for tight shutoff**
- Heavy duty cast construction**
- Body-guided wedge insures alignment, low closing torques and reduced noise and vibration**
- Integral backseat**
- Outside screw and yoke, non-rising handwheel, rising stem**
- Locking handwheel nut**
- Rugged carbon steel handwheel**
- Available in a wide range of alloys**



**Designed to ANSI B16.34,
API 603, tested to API 598.
Face to face ANSI B16.10,
Flanges to ANSI B16.5**



NO.	PART NAME	A 351-CF8M	A 351-CN7M
1	BODY	A 351-CF8M	A 351-CN7M
2	WEDGE	A 351-CF8M	A 351-CN7M
3	STEM	A 276-316	A 351-CN7M
4	STUD	A 193-B8	A 193-B8M
5	HEX NUT	A 194-8	A 194-8M
6	GASKET	PTFE	PTFE
7	BONNET	A 351-CF8M	A 351-CN7M
8	GLAND PACKING	BRAIDED PTFE	BRAIDED PTFE
9	GLAND BUSH	A 276-316	A 351-CN7M
10	GLAND FLANGE	A 276-316	A 351-CN7M
11	STEM NUT	AL BRONZE (B 148-Gr D)	AL BRONZE (B 148-Gr D)
12	BONNET BUSH	A276-304/A 351-CF8	A276-304/A 351-CF8
13	HAND WHEEL	A 216-WCB/DUCTILE IRON	A 216-WCB/DUCTILE IRON
14	PARALLEL KEY	C 40	C 40
15	HAND WHEEL NUT	C 45 (BLACKODISED)	C 45 (BLACKODISED)
16	GROOVED PIN	A 276-316	A 276-316
17	GLAND BOLT	A 182-F304	A 182-F304
18	GREASE NIPPLE	A 276-304	A 276-304
19	YOKE	A 351-CF8M *	A 351-CN7M *

* YOKE FOR 14" AND UP IS CFB

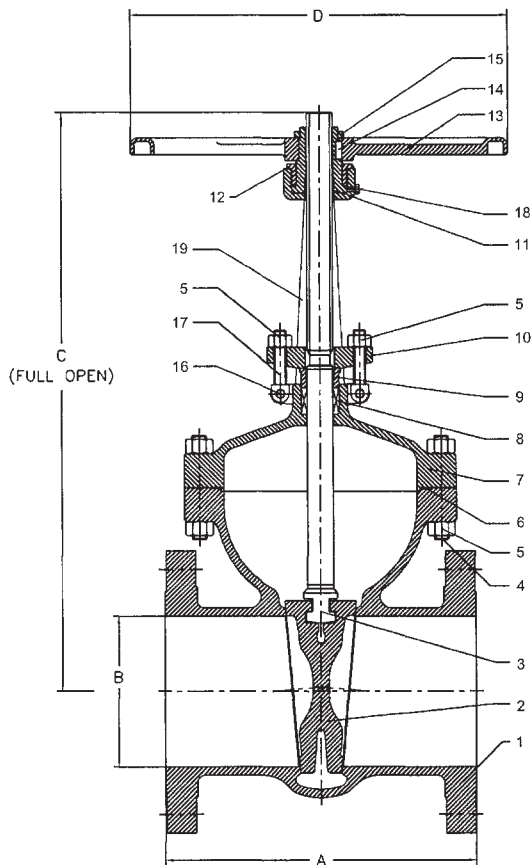
SIZE	INCH	1	1½	2	2½	3	4	5	6	8	10	12	14	16	18	20	24
		MM	25	40	50	65	80	100	125	150	200	250	300	350	400	450	500
A	INCH	5	6.5	7	7.5	8	9	10	10.5	11.5	13	14	15	16	17	18	20
	MM	127	165.1	177.8	190.5	203.2	228.6	254	266.7	292.1	330.2	355.6	381	406.4	431.8	457.2	508
A (BWE)	INCH	5	6.5	8.5	9.5	11.12	12	15	15.88	16.5	18	19.75	22.5	24	26	28	32
	MM	127	165.1	215.9	241.3	282.4	304.8	381	403.3	419.1	457.2	501.6	571.5	609.6	660.4	711.2	812.8
B	INCH	1	1.5	2	2.5	3	4	5	6	8	10	12	13.25	15.25	17.25	19.25	23.25
	MM	25	38	51	64	76	102	127	152	203	254	305	337	387	438	489	591
C	INCH	9.7	12.8	14	17	19.1	23.5	27	29.4	38.5	45.3	53	61	69.3	76.9	87.2	101.5
	MM	243	326	357	432	485	596	686	746	978	1151	1341	1558	1761	1954	2215	2579
D	INCH	5	8	8	10	10	14	18	18	20	20	25	25	35.4	35.4	35.4	35.4
	MM	127	203	203	254	254	356	457	457	508	508	635	635	900	900	900	900
Weight	LBS	7	20	31	42	52	81	106	141	224	322	458	657	825	1466	1940	2194
	KGS	3	9	14	19	24	37	48	64	102	146	208	298	374	665	880	995

Stainless Steel Gate Valve

Designed to ANSI B16.34,
API 603, tested to API 598.
Face to face ANSI B16.10,
Flanges to ANSI B16.5

Model #10

Class 300 (2" to 14")



- Full port**
- Precision machined flexible wedge gate and seat for tight shutoff**
- Heavy duty cast construction**
- Body-guided wedge insures alignment, low closing torques and reduced noise and vibration**
- Integral backseat**
- Outside screw and yoke, non-rising handwheel, rising stem**
- Locking handwheel nut**
- Rugged carbon steel handwheel**
- Available in a wide range of alloys**

NO.	PART NAME	CF8M	A 351-CN7M
1	BODY	CF8M	A 351-CN7M
2	WEDGE	CF8M	A 351-CN7M
3	STEM	316	A 351-CN7M
4	STUD	A 193-B8	A 193-B8M
5	HEX NUT	A 194-8	A 194-8M
6	GASKET	PTFE	PTFE
7	BONNET	CF8M	A 351-CN7M
8	GLAND PACKING	BRAIDED PTFE	BRAIDED PTFE
9	GLAND BUSH	316	A 351-CN7M
10	GLAND FLANGE	316	A 351-CN7M
11	STEM NUT	AL BRZ (B 148-Gr D)	AL BRZ (B 148-Gr D)
12	BONNET BUSH	A276-304/A 351-CF8	A276-304/A 351-CF8
13	HAND WHEEL	A 216-WCB/DUCTILE IRON	A 216-WCB/DUCTILE IRON
14	PARALLEL KEY	C 40	C 40
15	HAND WHEEL NUT	C 45 (BLACKODISED)	C 45 (BLACKODISED)
16	GROOVED PIN	A 276-316	A 276-316
17	GLAND BOLT	A 182-F304	A 182-F304
18	GREASE NIPPLE	A 276-304	A 276-304
19	YOKE	A 351-CF8M *	A 351-CN7M *

* YOKE FOR 14" AND UP IS CF8

SIZE	INCH	2	2½	3	4	6	8	10	12	14
	MM	50	65	80	100	150	200	250	300	350
A *	INCH	8.5	9.5	11.12	12	15.88	16.5	18	19.75	30
	MM	215.9	241.3	282.4	304.8	403.4	419.1	457.2	501.7	762.0
B	INCH	2	2.5	3	4	6	8	10	12	13.25
	MM	51	64	76	102	152	203	254	305	337
C	INCH	14	17	19.5	23.7	31.5	39.6	47	58	63
	MM	357	432	495	603	800	1005	1194	1473	1600
D	INCH	10	14	14	18	20	20	25	25	36
	MM	254	358	358	457	508	508	635	635	900
Weight	LBS	40	-	89	148	268	418	672	946	1342
	KGS	18	-	40	67	122	190	305	429	609

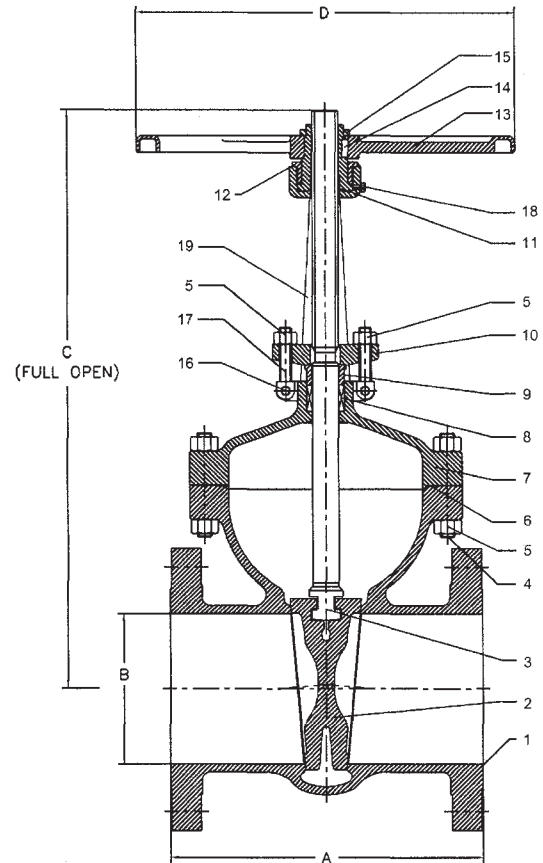
* BWE dimensions are the same as flanged

Stainless Steel Gate Valve

Model #10
Class 600 (2" to 12")

Designed to ANSI B16.34,
 API 603, tested to API 598.
 Face to face ANSI B16.10,
 Flanges to ANSI B16.5

- Full port**
- Precision machined flexible wedge gate and seat for tight shutoff**
- Heavy duty cast construction**
- Body-guided wedge insures alignment, low closing torques and reduced noise and vibration**
- Integral backseat**
- Outside screw and yoke, non-rising handwheel, rising stem**
- Locking handwheel nut**
- Rugged carbon steel handwheel**
- Available in a wide range of alloys**



NO.	PART NAME	CF8M	A 351-CN7M
1	BODY	CF8M	A 351-CN7M
2	WEDGE	CF8M	A 351-CN7M
3	STEM	316	A 351-CN7M
4	STUD	A 193-B8	A 193-B8M
5	HEX NUT	A 194-8	A 194-8M
6	GASKET	PTFE	PTFE
7	BONNET	CF8M	A 351-CN7M
8	GLAND PACKING	BRAIDED PTFE	BRAIDED PTFE
9	GLAND BUSH	316	A 351-CN7M
10	GLAND FLANGE	316	A 351-CN7M
11	STEM NUT	AL BRZ (B 148-Gr D)	AL BRZ (B 148-Gr D)
12	BONNET BUSH	A276-304/A 351-CF8	A276-304/A 351-CF8
13	HAND WHEEL	A 216-WCB/DUCTILE IRON	A 216-WCB/DUCTILE IRON
14	PARALLEL KEY	C 40	C 40
15	HAND WHEEL NUT	C 45 (BLACKODISED)	C 45 (BLACKODISED)
16	GROOVED PIN	A 276-316	A 276-316
17	GLAND BOLT	A 182-F304	A 182-F304
18	GREASE NIPPLE	A 276-304	A 276-304
19	YOKE	A 351-CF8M	A 351-CN7M

SIZE	INCH	2	2½	3	4	6	8	10	12	
	MM		50	65	80	100	150	200	250	300
A *	INCH		11.5	13.0	14.0	17.0	22.0	26.0	31.0	33.0
	MM		292.1	330.2	355.6	431.8	558.8	660.4	787.4	838.2
B	INCH		2	2.5	3	4	6	7.87	9.75	11.75
	MM		51	64	76	102	152	200	248	299
C	INCH		14.96	18.0	20.7	26.5	34.0	41.1	47.2	61.9
	MM		380.0	457.0	515.0	673	865	1045	1200	1573
D	INCH		10	14	14	18	20	20	25	25
	MM		254	358	358	457	508	508	635	635
Weight	LBS		87	120	127	257	492	798	1408	1975
	KGS		40	55	58	117	223	362	639	896

* BWE dimensions are the same as flanged